

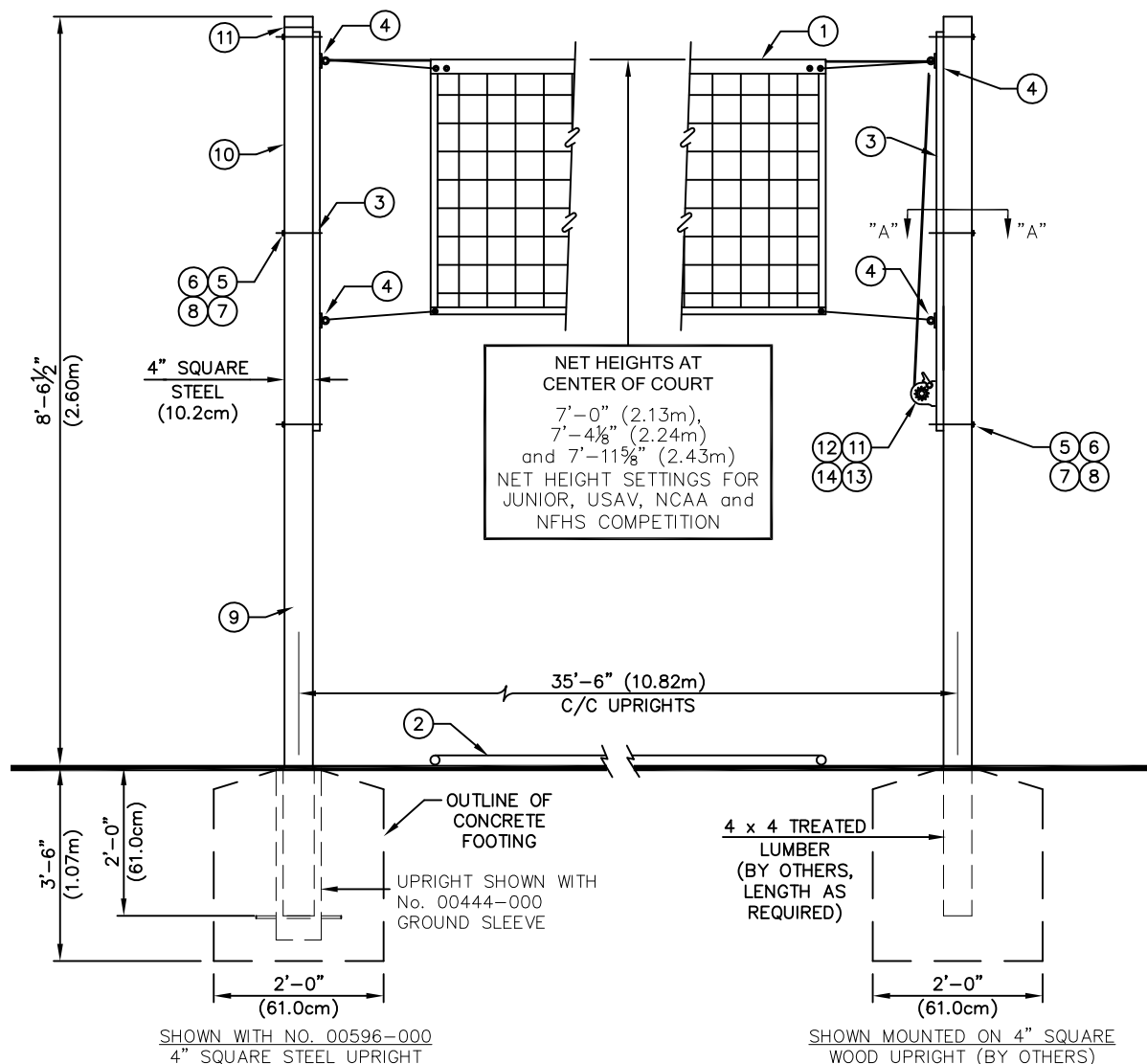
# 00595-000 - OUTDOOR VOLLEYBALL KIT

**Porter**

WWW.PORTERATHLETIC.COM/FACILITY

## BASKETBALL SPECIFICATION SHEET

R-595



PARTS LIST		
No.	QTY.	DESCRIPTION
00595-000 OUTDOOR VOLLEYBALL KIT		
1	1	02254 000 32' x 3' VOLLEYBALL NET
2	1	ROPE 00060 000 COURT MARKER
3	2	CHNL 00061 0EO VOLLEYBALL ADJUSTMENT CHANNEL
4	4	CHNL 00063 000 CHANNEL SLIDE ASSEMBLIES
5	6	HDWE 01222 0EO 3/8" x 4 1/2" Lg. Hex Hd Cap Screw (Gr. 5)
6	6	HDWE 04002 0EO 3/8" LOCKWASHER
7	6	HDWE 05004 0EO 3/8" FLATWASHER
8	6	HDWE 53035 0EO 3/8" TAPPED SQUARE NUT
00596-000 4" SQUARE VOLLEYBALL UPRIGHTS		
9	2	POLE 00062 101 4" Sq. POLE x 10'-6 1/2" Lg. A
10	2	PCAP 00012 002 4" Sq. TUBE CAP
00597-000 VOLLEYBALL NET WINCH		
11	1	02201 100 REEL FOR UPRIGHT
12	2	HDWE 01243 0EO 5/16" x 1" Lg. Hex Hd Cap Screw (Gr. 5)
13	2	HDWE 04001 0EO 5/16" LOCKWASHER
14	2	HDWE 53034 0EO 5/16" TAPPED SQUARE NUT

- 00595-000 OUTDOOR VOLLEYBALL UPRIGHTS (LESS UPRIGHTS)
- 00596-000 4" SQUARE STEEL UPRIGHTS (USE W/ No. 00595-000 KIT)
- 00444-000 4" SQUARE GROUND SLEEVE (EACH) (USE W/ No. 00596-000)
- 00597-000 NET TENSIONING WINCH W/ HARDWARE (USE W/ No. 00595-000)

**Porter**

888-277-7778 PORTER@PORTERATHLETIC.COM  
 © COPYRIGHT 2016 PORTER ATHLETIC - ALL RIGHTS RESERVED

PROJECT NUMBER

PROJECT NAME

06/21/2016

# 00595-000 - OUTDOOR VOLLEYBALL KIT

## SPECIFICATIONS

### PORTER No. 00595-000 OUTDOOR VOLLEYBALL KIT (LESS UPRIGHTS)

Kit shall consist of two formed steel galvanized channel adjustment units. Hardware to attach channels to any optional 4" (10.2cm) square steel or 3-1/2" (8.9cm) square wood post is included. Four sliding eyebolts are supplied for net attachment, allowing for infinite net height adjustment. All hardware shall be plated.

Kit also includes No. 02254-000 volleyball net and No. 09855-000 perimeter court marker

### PORTER No. 00596-000 4" SQUARE STEEL UPRIGHTS

Uprights shall be of 4" (10.2cm) square heavy-wall steel tubing. Pole sections shall be designed to extend 2'-0" (60.9cm) into concrete footings or into optional outdoor or indoor sleeves. All holes for attachment of No. 00595-000 channel adjustment units shall be pre-drilled. Uprights shall be finished in a durable blue, powder-coated finish.

### PORTER No. 00597-000 NET TENSIONING WINCH WITH HARDWARE

Kit shall include net tensioning winch and hardware to attach it to No. 00595-000 channel adjustment units. Tensioning winch shall be of ratchet type to hold net tension. Winch and hardware shall be plated.

## OPTIONAL ITEMS TO SPECIFY

- See page No. R-444 for specifications on Porter No. 00444-000 Outdoor Ground Sleeve (Each) when removal of volleyball system is required.